



GENOMICS

BIOSCI. & TECH. CO., LTD.
基龍米克斯 生物科技股份有限公司

- Results highlighted in green are usually authentic as long as the cells do not carry a deficiency in DNA mismatch repair (MMR). Results highlighted in yellow indicate a distant relationship when there is a drift of STR alleles in MMR-negative cell lines. Clearly incorrect cell lines are present when the background is red.

◆ Conclusion :

Base on comparison with DSMZ database, this human cell line was highly identical with

- A2058 (Source : IFO50276) (Similarity 100%)
- A2058 (Source : CRL-11147) (Similarity 100%)

Similarity	Cell line	Source	Shared	D5S818	D7S820	D13S317	D16S539	vWA	TH01	TPOX	CSF1PO	Amelogenin
		Your query		9, 12	11, 11	13, 14	9, 13	14, 18	7, 9	8, 8	10, 11	X, Y
100 %	A2058	IFO50276	9	9, 12	11, 11	13, 14	9, 13	14, 18	7, 9	8, 8	10, 11	X, Y
100 %	A2058	CRL-11147	9	9, 12	11, 11	13, 14	9, 13	14, 18	7, 9	8, 8	10, 11	X, Y

◇ Refl: STR loci genotype result

技術人員 : 陳柏翰

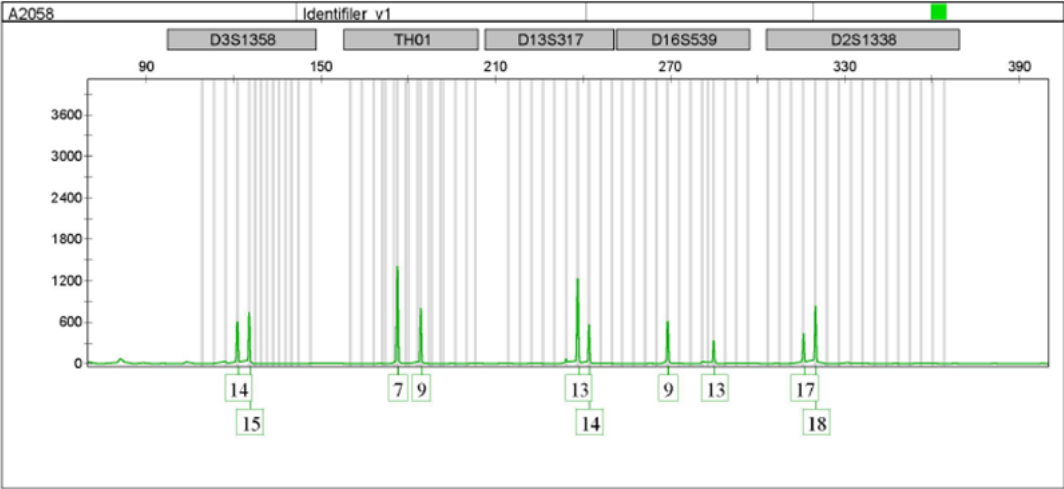
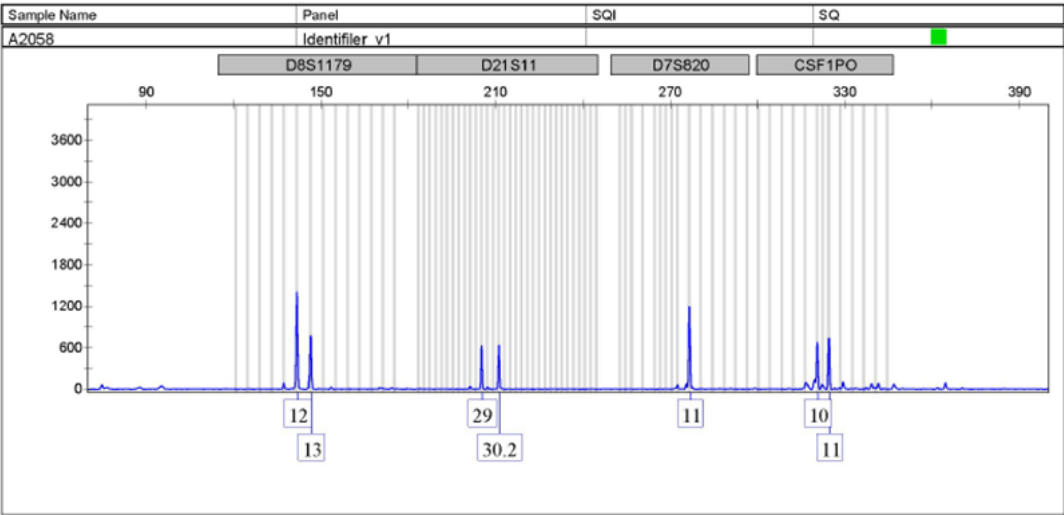
實驗室主管:


陳素蓮

AB Applied Biosystems

GeneMapper 4.0

20240229





BIOSCI. & TECH. CO., LTD.
基龍米克斯 生物科技股份有限公司

- Results highlighted in green are usually authentic as long as the cells do not carry a deficiency in DNA mismatch repair (MMR). Results highlighted in yellow indicate a distant relationship when there is a drift of STR alleles in MMR-negative cell lines. Clearly incorrect cell lines are present when the background is red.

◆ Conclusion :

Base on comparison with DSMZ database, this human cell line was highly identical with

- A-375 (Source : CRL-7904) (Similarity 100%)
- A375.S2 (Source : CRL-1872) (Similarity 100%)
- A-375 [A375] (Source : CRL-1619) (Similarity 100%)

Similarity	Cell line	Source	Shared	D5S818	D7S820	D13S317	D16S539	vWA	TH01	TPOX	CSF1PO	Amelogenin
		Your query		12, 12	9, 9	11, 14	9, 9	16, 17	8, 8	8, 10	11, 12	X, X
100 %	A-375	CRL-7904	9	12, 12	9, 9	11, 14	9, 9	16, 17	8, 8	8, 10	11, 12	X, X
100 %	A375.S2	CRL-1872	9	12, 12	9, 9	11, 14	9, 9	16, 17	8, 8	8, 10	11, 12	X, X
100 %	A-375 [A375]	CRL-1619	9	12, 12	9, 9	11, 14	9, 9	16, 17	8, 8	8, 10	11, 12	X, X

◇ Refl: STR loci genotype result

技術人員 :陳柏翰

實驗室主管: 陳素蓮

